



MULTI-METER CABINETS

400V — 400A

CLAVED offers a wide range of solutions for grouping electricity meters at one location of a building, on a wall, ...

Multi-meter cabinets may enable:

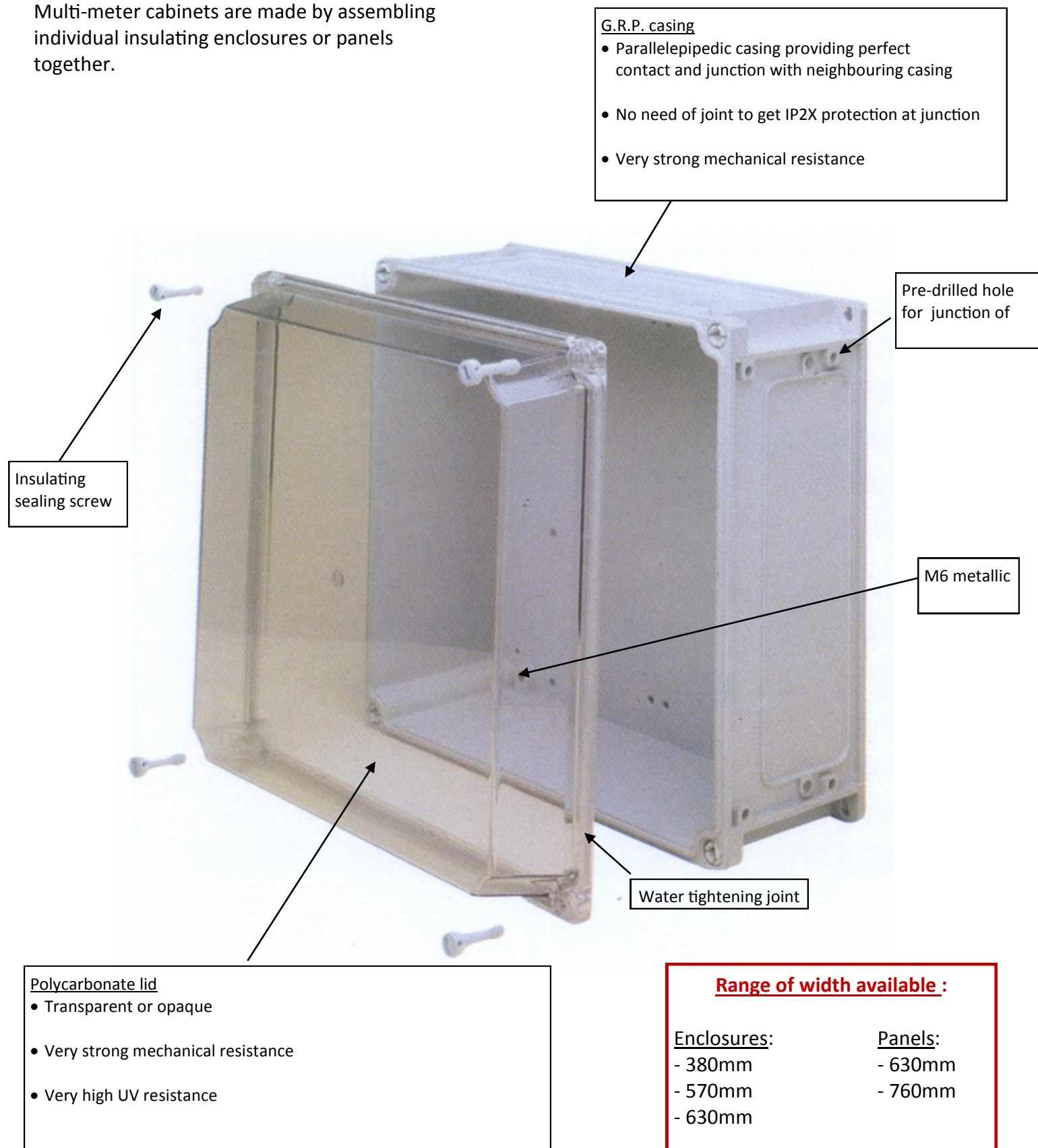
- Fixing and protection of meters
- Energy distribution to each meter
- A global protection of complete building
- Individual protection for each service connection
- Possible cut off for each meter separately
- Connection of all various customer electrical installations

Cabinets are made of self-extinguishing glassfiber reinforced polyester (casings) and high quality polycarbonate (lids). They are resistant to UV, to the harshest environments, to shocks, and they provide a high dielectric strength in any situation.

They comply with International Electrotechnical Commission (IEC) standards.

INSULATING ENCLOSURES

Multi-meter cabinets are made by assembling individual insulating enclosures or panels together.



ASSEMBLY: 4 functions

1

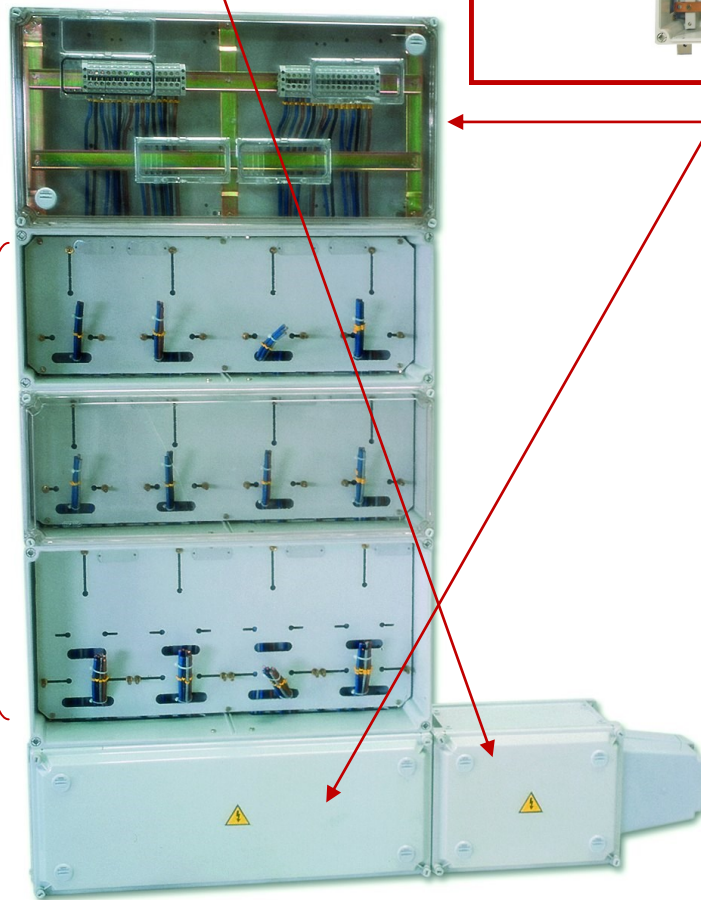
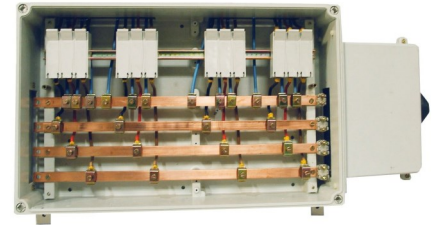
**Incoming cable connection
and general protection**



2

Distribution

- Busbar system and distribution of cables feeding Meters
- Optional fuse holders for cut off/protection of each meter



3

Closed meter cabinet

- To fix meter on
- For single phase and/or three phase meters
- Prewired
- Customer labelling



Opened panel

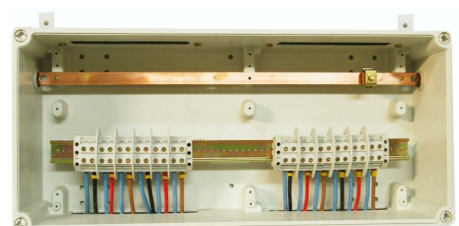
- To fix meter on
- For single phase and/or three phase meters
- Prewired
- Customer labelling



4

Customer Service Connection

- connection to be performed on terminal blocks or circuit breakers
- Earthing bar

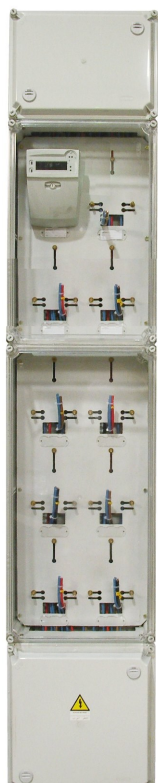


EXAMPLES OF CONFIGURATIONS:

380mm width

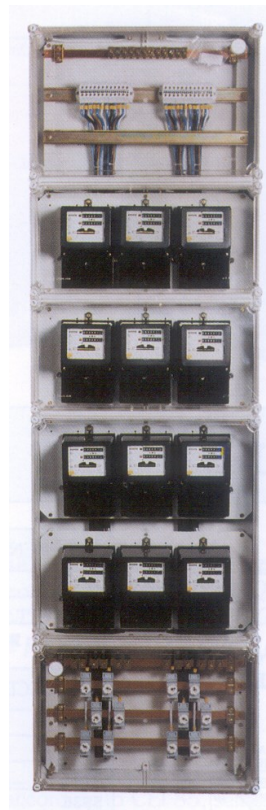
Well adapted for upgrading of old installations in narrow technical spaces

For 10 single phase meters



570mm width

For 12 single phase meters



630mm width

For 3 three phase meters and Test terminal blocks



760mm width

For 12 single phase & 4 three phase meters



EXAMPLES OF CONFIGURATIONS:

630mm width

For 12 single
phase meters



For 6 three
phase meters

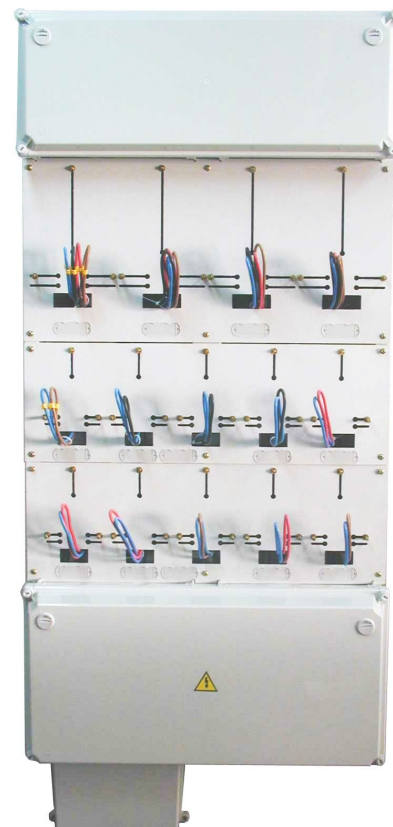


760mm width

For 15 single
phase meters

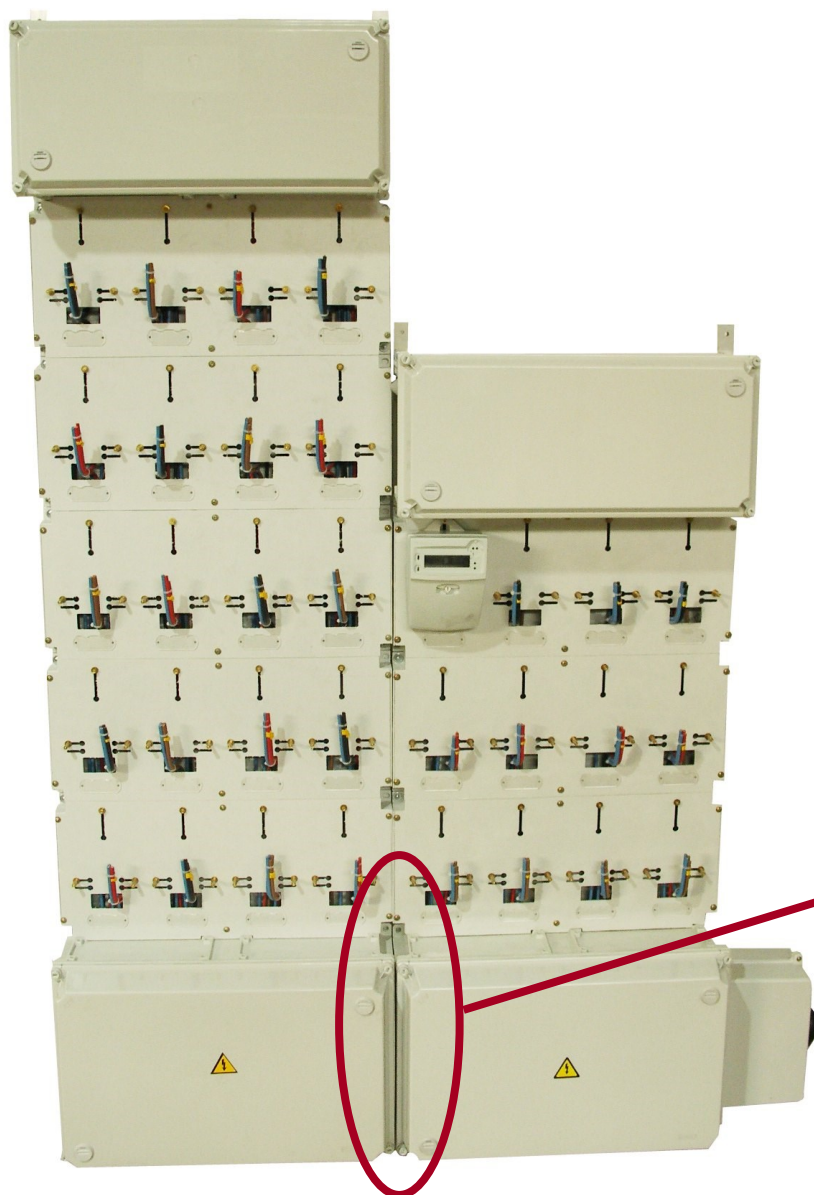


For 10 single phase
& 4 three phase
meters



JUNCTION OF MULTI-METER CABINETS

Set of 4 jumpers:



- Two multi-meter cabinets can be fixed together to increase total number of meters installed with only one incoming supply cable
- Specific jumper must be provided for attachment of the two busbar systems together

SEIFEL S.A.S
8, Rue Claude Chapel • CS 51865
35418 Saint-Malo cedex
FRANCE
www.seifel.eu

CLAVED S.A.U.
Ctra. C-17 Km. 17,82
08185 Lliçà de Vall (Barcelona)
SPAIN
www.claved.es

Export Department
Phone : +33 (0)2 99 21 52 08
Fax +33 (0)2 99 81 95 13
export@seifel.fr